

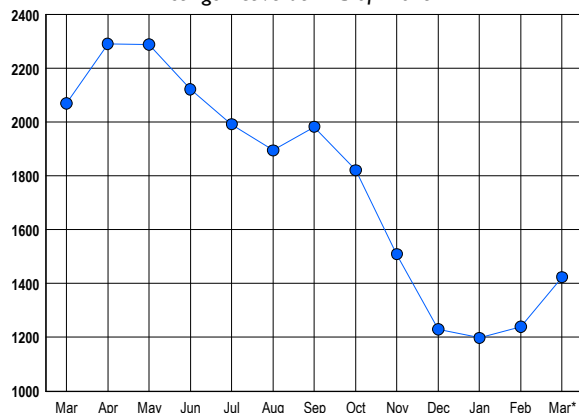


## LISTINGS

Prices Range	New This Month			Total Actives		
	2013	2012	% Change	2013	2012	% Change
0 - 149,999	6	13	-53.8	15	17	-11.8
150,000 - 199,999	31	34	-8.8	15	34	-55.9
200,000 - 299,999	120	152	-21.1	82	163	-49.7
300,000 - 399,999	194	258	-24.8	168	371	-54.7
400,000 - 499,999	164	196	-16.3	185	300	-38.3
500,000 - 599,999	119	149	-20.1	140	234	-40.2
600,000 - 699,999	100	126	-20.6	144	205	-29.8
700,000 - 799,999	86	110	-21.8	125	144	-13.2
800,000 - 899,999	73	69	5.8	107	111	-3.6
900,000 - 999,999	44	48	-8.3	54	80	-32.5
1,000,000 - 1,249,999	44	71	-38.0	84	102	-17.6
1,250,000 - 1,499,999	47	48	-2.1	92	93	-1.1
1,500,000 +	91	88	3.4	213	215	-0.9
<b>TOTALS</b>	<b>1119</b>	<b>1362</b>	<b>-17.8</b>	<b>1424</b>	<b>2069</b>	<b>-31.2</b>

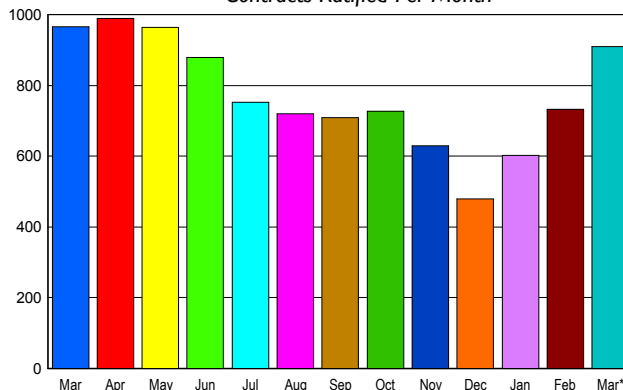
## INVENTORY TREND

Listings Active at End of Month



## SALES TREND

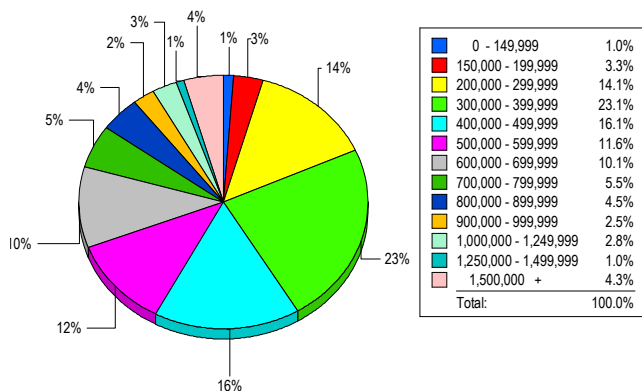
Contracts Ratified Per Month



## CONTRACTS

Price Range	New This Month			Year-To-Date		
	2013	2012	% Change	2013	2012	% Change
0 - 149,999	6	17	-64.7	20	53	-62.3
150,000 - 199,999	35	54	-35.2	85	147	-42.2
200,000 - 299,999	139	187	-25.7	330	482	-31.5
300,000 - 399,999	209	220	-5.0	488	488	0.0
400,000 - 499,999	141	116	21.6	320	239	33.9
500,000 - 599,999	99	110	-10.0	253	217	16.6
600,000 - 699,999	80	69	15.9	187	169	10.7
700,000 - 799,999	41	58	-29.3	116	118	-1.7
800,000 - 899,999	47	41	14.6	95	76	25.0
900,000 - 999,999	30	19	57.9	58	39	48.7
1,000,000 - 1,249,999	31	32	-3.1	66	63	4.8
1,250,000 - 1,499,999	24	18	33.3	58	49	18.4
1,500,000 +	29	26	11.5	70	53	32.1
<b>TOTALS</b>	<b>911</b>	<b>967</b>	<b>-5.8</b>	<b>2146</b>	<b>2193</b>	<b>-2.1</b>

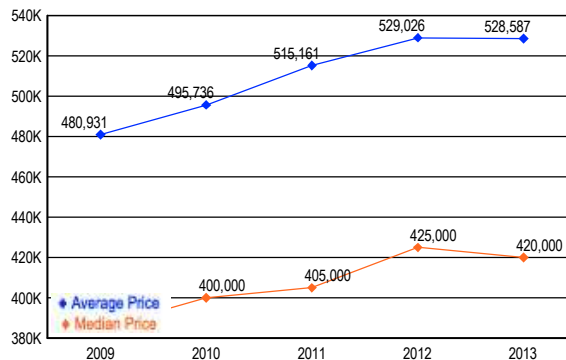
## MARKET BY PRICE RANGE



## SETTLEMENTS

Price Range	New This Month			Year-to-Date		
	2013	2012	% Change	2013	2012	% Change
0 - 149,999	6	7	-14.3	20	40	-50.0
150,000 - 199,999	20	34	-41.2	51	82	-37.8
200,000 - 299,999	85	105	-19.0	252	301	-16.3
300,000 - 399,999	139	107	29.9	330	273	20.9
400,000 - 499,999	97	62	56.5	226	148	52.7
500,000 - 599,999	70	62	12.9	161	136	18.4
600,000 - 699,999	61	47	29.8	129	117	10.3
700,000 - 799,999	33	32	3.1	80	73	9.6
800,000 - 899,999	27	19	42.1	53	43	23.3
900,000 - 999,999	15	8	87.5	26	22	18.2
1,000,000 - 1,249,999	17	18	-5.6	44	36	22.2
1,250,000 - 1,499,999	6	12	-50.0	21	19	10.5
1,500,000 +	26	9	188.9	42	28	50.0
<b>TOTALS</b>	<b>602</b>	<b>522</b>	<b>15.3</b>	<b>1435</b>	<b>1318</b>	<b>8.9</b>

## AVERAGE & MEDIAN PRICE



DATA SOURCE: Metropolitan Regional Information Systems, Inc. (MRIS)

NOTES: Properties not listed through this Multiple Listing Service are not reflected. The term "sales" represents ratified purchase contracts. Current year information is preliminary and subject to revision. Current year- to- date contract information may not equal the sum of the monthly contract totals reported in