

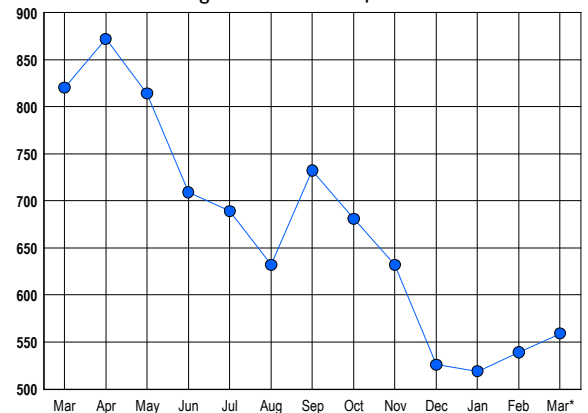


## LISTINGS

Prices Range	New This Month			Total Actives		
	2013	2012	% Change	2013	2012	% Change
0 - 149,999	9	26	-65.4	29	76	-61.8
150,000 - 199,999	25	33	-24.2	47	82	-42.7
200,000 - 299,999	51	74	-31.1	84	124	-32.3
300,000 - 399,999	39	51	-23.5	55	84	-34.5
400,000 - 499,999	49	51	-3.9	26	57	-54.4
500,000 - 599,999	47	42	11.9	40	45	-11.1
600,000 - 699,999	46	48	-4.2	28	34	-17.6
700,000 - 799,999	45	46	-2.2	24	45	-46.7
800,000 - 899,999	29	28	3.6	21	32	-34.4
900,000 - 999,999	15	23	-34.8	19	31	-38.7
1,000,000 - 1,249,999	18	24	-25.0	21	37	-43.2
1,250,000 - 1,499,999	21	31	-32.3	42	30	40.0
1,500,000 +	38	52	-26.9	123	143	-14.0
<b>TOTALS</b>	<b>432</b>	<b>529</b>	<b>-18.3</b>	<b>559</b>	<b>820</b>	<b>-31.8</b>

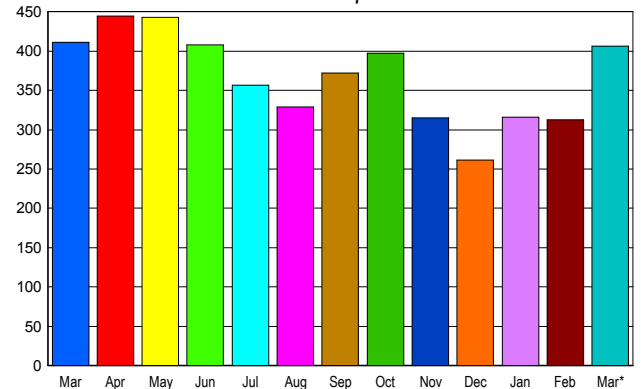
## INVENTORY TREND

Listings Active at End of Month



## SALES TREND

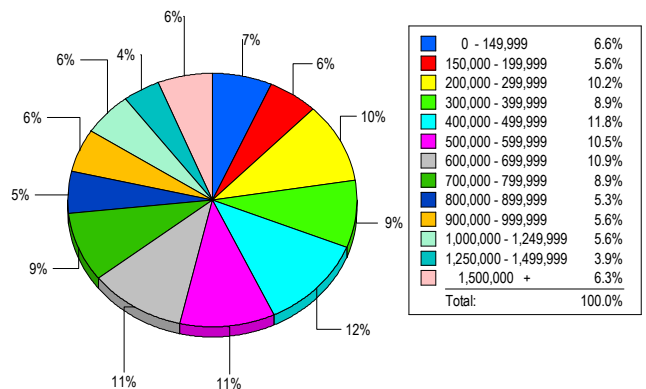
Contracts Ratified Per Month



## CONTRACTS

Price Range	New This Month			Year-To-Date		
	2013	2012	% Change	2013	2012	% Change
0 - 149,999	20	41	-51.2	60	100	-40.0
150,000 - 199,999	21	27	-22.2	55	70	-21.4
200,000 - 299,999	43	58	-25.9	109	160	-31.9
300,000 - 399,999	48	57	-15.8	114	129	-11.6
400,000 - 499,999	52	40	30.0	135	95	42.1
500,000 - 599,999	45	27	66.7	98	74	32.4
600,000 - 699,999	44	39	12.8	101	78	29.5
700,000 - 799,999	36	29	24.1	79	72	9.7
800,000 - 899,999	19	21	-9.5	55	55	0.0
900,000 - 999,999	17	15	13.3	45	22	104.5
1,000,000 - 1,249,999	16	17	-5.9	42	33	27.3
1,250,000 - 1,499,999	19	22	-13.6	45	47	-4.3
1,500,000 +	26	18	44.4	60	55	9.1
<b>TOTALS</b>	<b>406</b>	<b>411</b>	<b>-1.2</b>	<b>998</b>	<b>990</b>	<b>0.8</b>

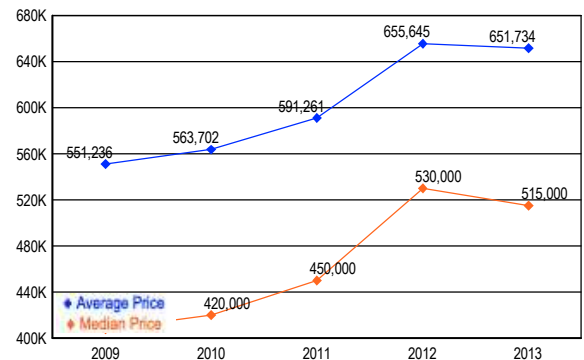
## MARKET BY PRICE RANGE



## SETTLEMENTS

Price Range	New This Month			Year-to-Date		
	2013	2012	% Change	2013	2012	% Change
0 - 149,999	20	16	25.0	53	58	-8.6
150,000 - 199,999	17	17	0.0	39	51	-23.5
200,000 - 299,999	31	37	-16.2	106	125	-15.2
300,000 - 399,999	27	41	-34.1	95	109	-12.8
400,000 - 499,999	36	20	80.0	93	62	50.0
500,000 - 599,999	32	26	23.1	83	63	31.7
600,000 - 699,999	33	26	26.9	81	68	19.1
700,000 - 799,999	27	17	58.8	53	62	-14.5
800,000 - 899,999	16	18	-11.1	44	40	10.0
900,000 - 999,999	17	8	112.5	39	18	116.7
1,000,000 - 1,249,999	17	10	70.0	38	21	81.0
1,250,000 - 1,499,999	12	14	-14.3	36	26	38.5
1,500,000 +	19	16	18.8	39	49	-20.4
<b>TOTALS</b>	<b>304</b>	<b>266</b>	<b>14.3</b>	<b>799</b>	<b>752</b>	<b>6.3</b>

## AVERAGE & MEDIAN PRICE



DATA SOURCE: Metropolitan Regional Information Systems, Inc. (MRIS)

NOTES: Properties not listed through this Multiple Listing Service are not reflected. The term "sales" represents ratified purchase contracts. Current year information is preliminary and subject to revision. Current year-to-date contract information may not equal the sum of the monthly contract totals reported in